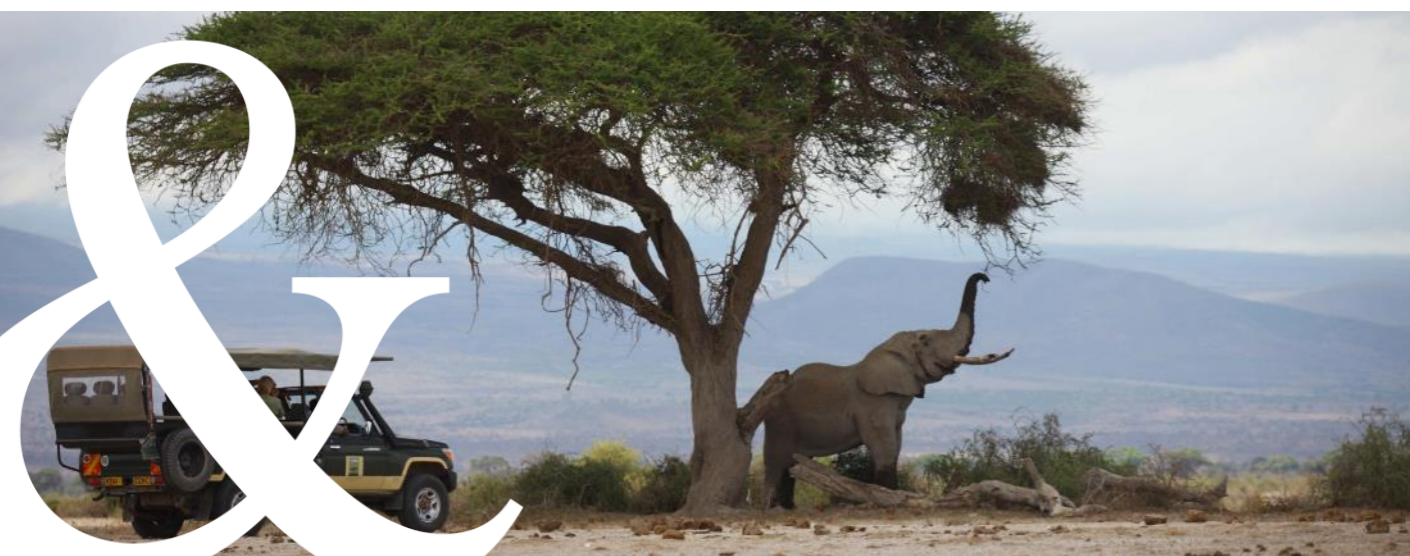
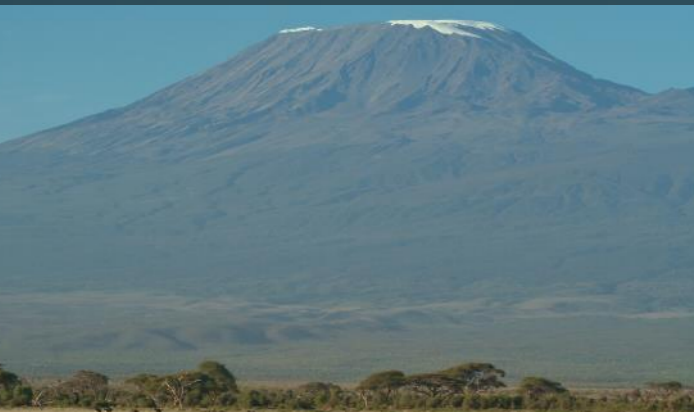


Classic Kenya & Tanzania



ITINERARY

1 Arrive in Nairobi

You will arrive at Jomo Kenyatta International Airport, clear customs and immigration before moving to the arrivals lounge where you will meet your Guardian Angel and driver and transfer to your Nairobi hotel.

Nairobi is the largest city between Cairo and Johannesburg. Though just south of the equator, it enjoys a spring-like climate. It is a modern city, yet its main avenues blaze with colour from tropical bushes and vines. Shopping in Nairobi varies from African clothing and craft shops to bazaar stalls and open-air markets where souvenir hunters find bargains ranging from woodcarvings to Persian carpets.

Overnight: Bronze: Eka Hotel | Silver: Tamarind Tree Hotel | Gold: Hemingways Nairobi

Meal Plan:

2 Amboseli National Park

After an early breakfast, drive to Amboseli National Park. Arrive in time for lunch and an afternoon game drive.

Amboseli National Park, at the foot of Africa's highest mountain Kilimanjaro, is one of the most popular of all Kenya's national parks. The snow-capped peak of Mount Kilimanjaro rising above a saucer of clouds dominates every aspect of the park. The snows of Kilimanjaro, white and crystalline, also form a backdrop to one of Kenya's most spectacular displays of wildlife - lion, elephant, leopard, rhino, cheetah, buffalo and a host of plains game and the combination makes the park a photographer's paradise.

Overnight: Bronze: Ol Tukai Lodge | Silver: Tortilis Camp | Gold: Tawi Lodge

Meal Plan: B,L,D

3 Amboseli National Park

After breakfast, you will head out to explore Amboseli on morning and afternoon game drives, returning to the lodge for lunch and a swim in the pool. Amboseli is famous for its large herds of elephants and game drives in their private vehicle provide the perfect opportunity to capture that once in a lifetime photo with Kilimanjaro in the background and a herd of elephants in the foreground. You have the opportunity to visit the AKP Safe Water for Schools Initiative in one of the schools.

Overnight: Bronze: Ol Tukai Lodge | Silver: Tortilis Camp | Gold: Tawi Lodge

Meal Plan: B,L,D

4 Ngorongoro

After a leisurely breakfast, you will drive to Namanga, the Kenya and Tanzania border. Here, you will bid a fond farewell to your Kenyan driver guide and meet your Tanzanian driver guide waiting with your private vehicle. Once you have been assisted through customs and immigration, you will drive to the Ngorongoro Highlands with packed lunch boxes.

Overnight: Bronze: Marera Mountain Lodge | Silver: Acacia Farm Lodge | Gold: Sanctuary Ngorongoro Crater Camp

Meal Plan: B,L,D





5 Ngorongoro

Your game drive today will be like no other, as you visit one of the most dramatic safari destinations in Africa: the Ngorongoro Crater. Descend to the crater floor in search of the Big Five with the backdrop of the forest covered crater walls surrounding you, creating a stunning canvas for all your wildlife photographs.

Overnight: Bronze: Marera Mountain Lodge | Silver: Acacia Farm Lodge | Gold: Sanctuary Ngorongoro Crater Camp
Meal Plan: B,L,D

6 Serengeti National Park

Bronze: Drive to the Serengeti National Park in the morning. Enjoy a picnic lunch on the way to maximise the time in the park. **Silver & Gold:** Drive when camp is in the south and fly when in the north. Enjoy the ever changing landscape below. One of the world's last great wildlife refuges, the Serengeti contains about three million large animals, many of them taking part in seasonal migrations, unparalleled in nature.

Overnight: Bronze: Sametu Serengeti Camp | Silver: Lemala Mara/Ndutu Tented Camp | Gold: Sanctuary Kichakani
Meal Plan: B,L,D

7 Serengeti National Park

Today, you have the full day to explore the vast plains of this magnificent wilderness. You can choose to head out with a picnic lunch to maximize your day or come back to the camp for lunch and an afternoon siesta before heading out again on an afternoon game drive.

Overnight: Bronze: Sametu Serengeti Camp | Silver: Lemala Mara/Ndutu Tented Camp | Gold: Sanctuary Kichakani
Meal Plan: B,L,D

8 Masai Mara National Reserve

After breakfast, you will bid farewell to Tanzania and catch a flight back into Kenya and land in the Masai Mara Game Reserve; the final stop on this incredible adventure. On arrival you will be collected in camp/lodge vehicle and taken on a game drive en-route to camp.

Overnight: Bronze: Fig Tree Camp | Silver: Ol Seki Hemingways | Gold: Sanctuary Olonana
Meal Plan: B,L,D

9 & 10 Masai Mara National Reserve

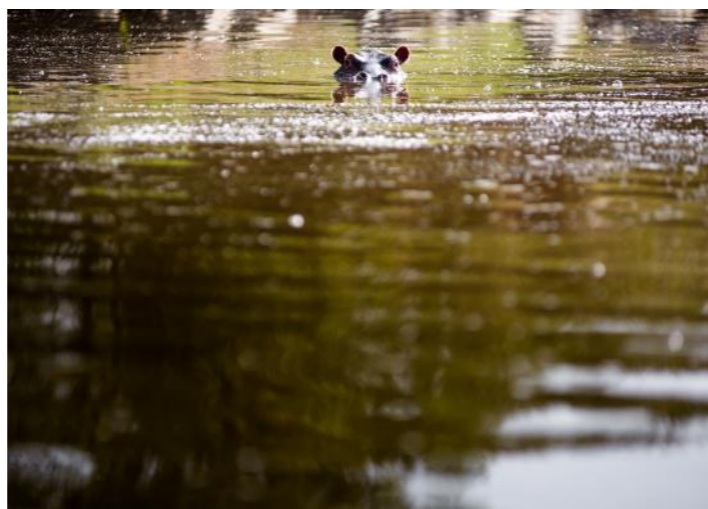
Today, you will head out on morning and afternoon game drives in the Masai Mara. The jewel in Africa's crown, Masai Mara is host to the most spectacular array of wildlife.

Overnight: Bronze: Fig Tree Camp | Silver: Ol Seki Hemingways | Gold: Sanctuary Olonana
Meal Plan: B,L,D

11 Depart

After a leisurely breakfast, you will fly back to Nairobi. There is time for some quick souvenir shopping if you so wish in the afternoon before being transferred to Jomo Kenyatta International Airport for your flight home.

Meal Plan: B



OVERVIEW

- 1 NIGHT – NAIROBI
- 2 NIGHTS - AMBOSELI NATIONAL PARK
- 2 NIGHTS - NGORONGORO
- 2 NIGHTS - SERENGETI NATIONAL PARK
- 3 NIGHTS - MASAI MARA NATIONAL RESERVE

INCLUDES

- Accommodation
- Meals & drinks as indicated
- Game drives in Amboseli, Ngorongoro, Serengeti and Masai Mara and a visit to the Safe Water For Schools project in Amboseli
- Internal flights (maximum 15kg/33lb luggage allowance)
- Meet and assist upon arrival at each Airport
- Park fees

EXCLUDES

- Meals & drinks not specified
- Premium drinks including Champagnes, cognacs, fine wines, premium brand spirits, cigars
- Touring and excursions not specified
- All items of personal nature, telephone calls, curio shop purchases
- Gratuities
- International flights & visas

PLEASE NOTE

- Rates are valid for 2024 (subject to change)
- Rates are based on a minimum of two guests (per person sharing)
- Rates are based on entry level category rooms
- Should any of the suggested properties not be available, a similar property will be quoted
- Transfers and guiding with an English speaking driver/guide unless other languages are requested
- Seasons rates are subject to camp/lodge/hotels
- Contact your consultant for a quotation based on guest's travel dates

